

WEST KENT HEALTH & CARE PARTNERSHIP

Key Info
2023



West Kent
Health and Care Partnership

- Regulation
- Scrutiny

Scrutiny committees

Regulatory bodies

Kent and Medway ICS system architecture

- Needs analysis
- Strategy design
- Outcome dev't

Local Authority Health and Well-being Boards

Kent and Medway Integrated Care Partnership

Broadening Social and Economic Development Sub-committee

Inclusive membership and involvement at all levels
Including clinical and professional leadership

Voluntary, Community and Social Enterprise forum

People and Communities Advisory Group

K&M GP Board

Strategic change programmes

- East Kent transformation
- Vascular
- Stroke

- Allocating resource
- Securing services
- System Quality
- Performance Improvement
- Assurance

NHS England
(Specialised Commissioning)

NHS Integrated Care Board* (NHS Kent and Medway)

Kent County Council & Medway Council

Improving Outcomes and Experience Committee

District Councils

Reducing Health Inequalities Committee
Productivity & Investment Committee

System Programme and Delivery Boards

System Programme Board

- Mental Health, Learning Disabilities & Autism
- Cancer Alliance
- Children and Young People
- Digital and Data
- Workforce

Delivery Board

- Planned Care
- Urgent Care
- LMNS Board

Supports development of system strategy and outcomes; and oversees system delivery and improvement (with place-based partnerships)

- Place and neighbourhood priority setting
- Operational delivery
- Place based assurance

4 x Place Based Partnerships (H&CP) with 42 Primary Care Networks

Provider Collaboratives

Individual providers:

Health and social care including: primary care; FTs and NHS Trusts; voluntary and community services; independent sector

Other ICB Committees include Primary Care Commissioning, Audit and Risk and Remuneration Committees

WEST KENT PARTNERS IN THE HEALTH & CARE PARTNERSHIP



West Kent
Health and Care Partnership

- MTW - Hospitals
- KCHFT - Community health
- KMPT - Mental Health
- WKPC – GP Federation
- Resident groups - Healthwatch
- Voluntary and community groups - Involvement
- PCN Clinical directors
- Districts: Maidstone, Tonbridge & Malling, Tunbridge Wells, Sevenoaks
- KCC
- North East London Foundation Trust

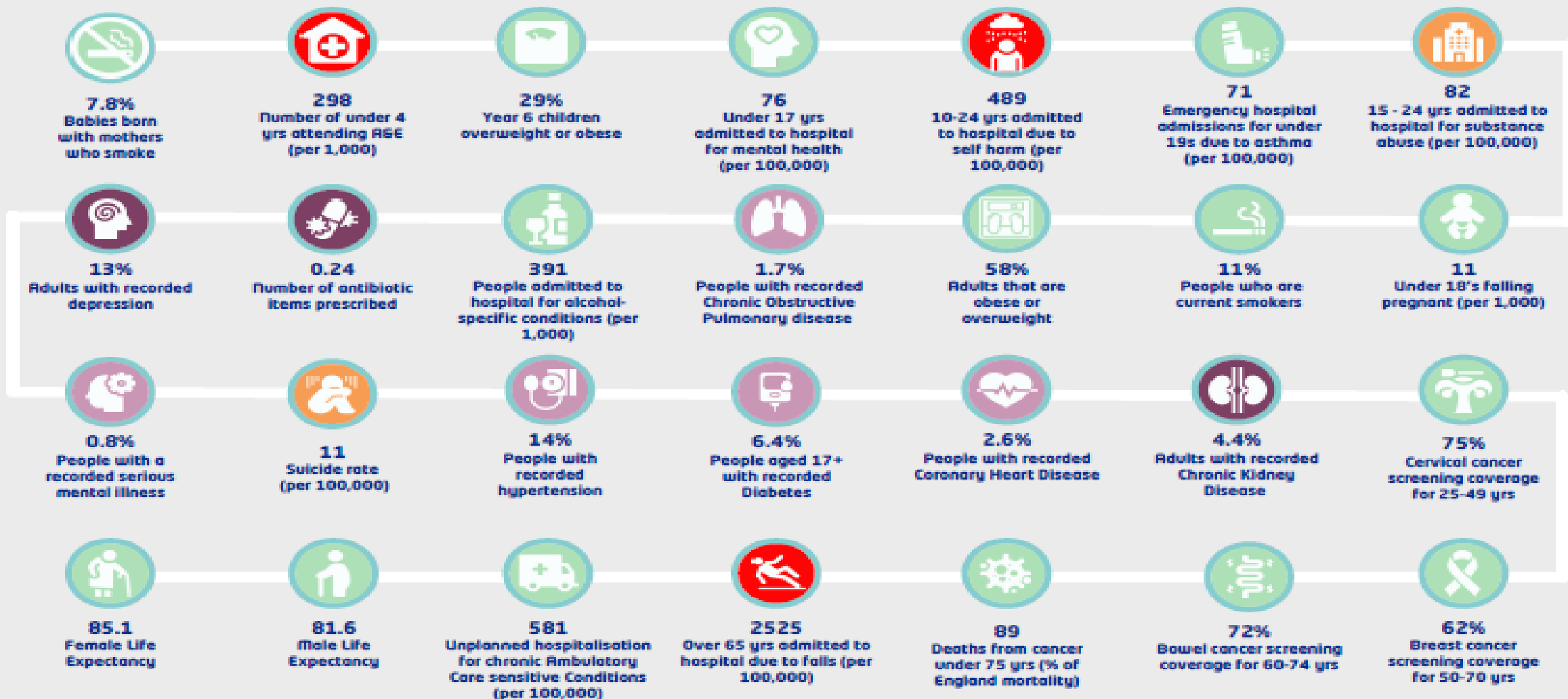


Place Development

West Kent Life Course Indicators (08/2022)



West Kent
Health and Care Partnership



WEST KENT PRIORITIES



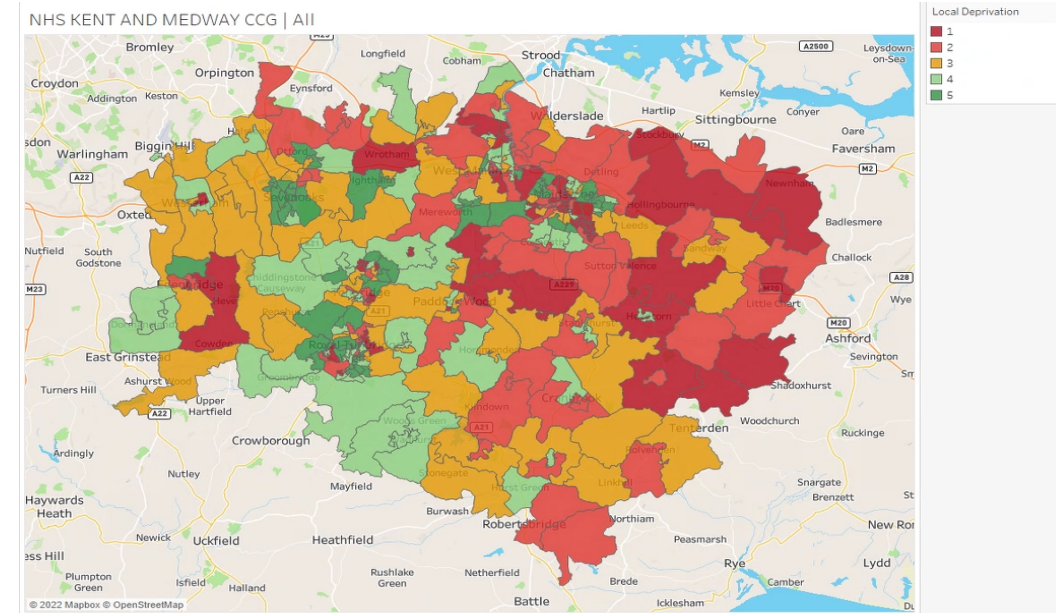
West Kent
Health and Care Partnership

Priorities:

- Children's and Adults mental health
- Frailty & Complex Needs
- Maidstone Inequalities
- Integrated Neighbourhood Teams
- Discharge & Flow

Enablers:

- Workforce
- Engagement/ Co-production
- Finance/contracts
- Digital
- Estates
- Population health/prevention



INTs - APPROACH OVER NEXT 12 MONTHS

1

- All PCNS establish the foundation elements of the INT model over 2023/24 including:

1. INT Partnership Group
2. INT Patient/Resident engagement/coproduction forum

2

- Pilot key elements of the operational model in different PCN areas including:

3. Electronic front door
4. Core INT team to undertake shared workload/case management
5. Use of shared patient system
6. Extended INT to provide support on the wider H&WB
7. MDTs for significant/complex cohorts at Neighbourhood level
8. Cross PCN planning and support on significant cohorts

3

- Provide West Kent wide support to share learning and improve skills development

9. Establish a West Kent INT network group to share learning of the pilot activity and facilitate mutual support/shared electronic area
10. Provide active support to all areas piloting and WK wide system learning opportunities to support progress on INTs in all PCN areas

WHAT WE WOULD PILOT WHERE

INTEGRATED NEIGHBOURHOOD TEAM ELEMENT	SITE(S) FOR IMPLEMENTATION	CURRENT STATUS
INT Partnership Forum	All PCN Areas	4 in progress
Resident/Patient Forum	All PCN Areas	4 in progress
Electronic front door	Tunbridge Wells	Started planning
Core INT shared workload/case mgmt.	Weald	New
Core INT using shared patient system	Tonbridge	New
Development of MDTs complex cohorts	Weald/Maidstone	Weald pilot MH
Cross PCN working for shared cohorts	Maidstone PCNs	New
Extended INT wider H&WB	Sevenoaks	New
WK shared learning forum	All PCN Areas	New
WK learning and development offer	All PCN Areas	New



WEST KENT HCP - REVISED GOVERNANCE (Jan 2023)

